

THE HOTEL JAY: CONFERENCE CENTER

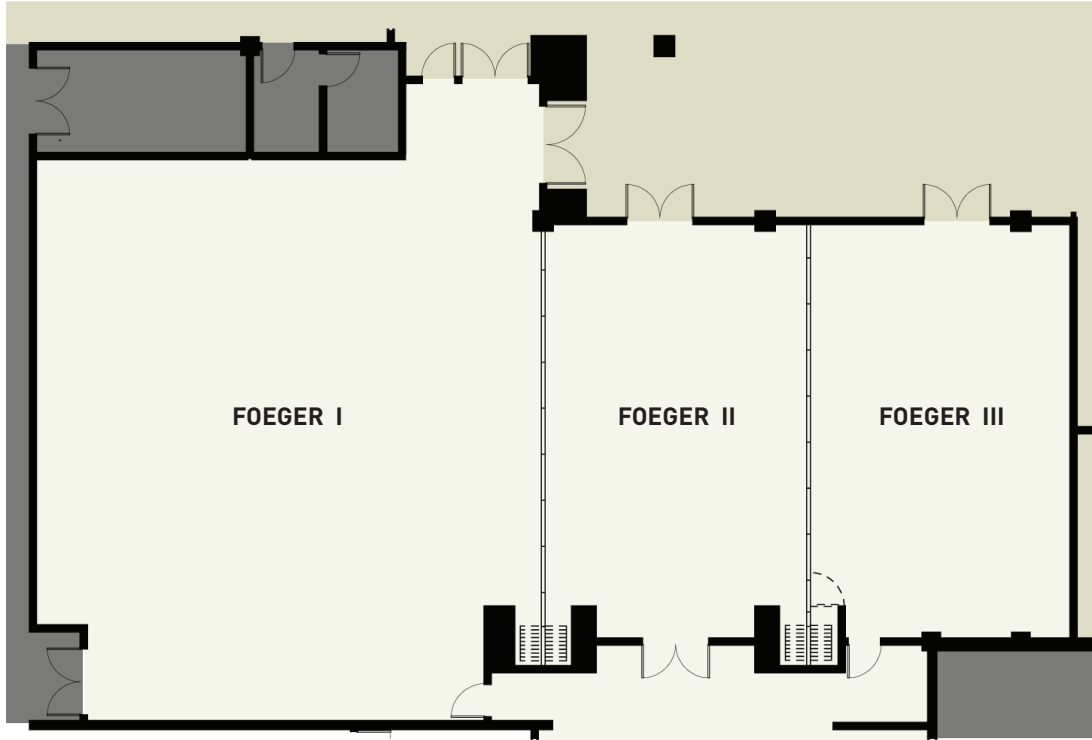


The Hotel Jay Conference Center is a bit of the old mixed with some major new. Industrial, rustic, and contemporary flares merge to create a compelling, one-of-a-kind space where state-of-the-art audio visual equipment, and the most advanced technology guarantee a glitch free event. Each of the seven spaces within the conference center are delightfully unique and versatile to meet the needs of each conference, meeting, or event that come through the Jay Peak doors. The Hotel Jay is also home to several restaurant and bar options including The Foundry, Mountain Dick's Pizza, Buddy's Mug Coffee Shop, The Drink, and The Warming Shelter Snack Bar, which together offer a wide range of options for breakfast, lunch and dinner. Some can also be configured to use as additional meeting/event space.

The Conference Center is a gathering spot for groups small and large from 10-425 persons.

It is a space where great triumphs will be had, brilliant ideas will be created, and unique experiences are absolute.

THE HOTEL JAY: THE FOEGER BALLROOM



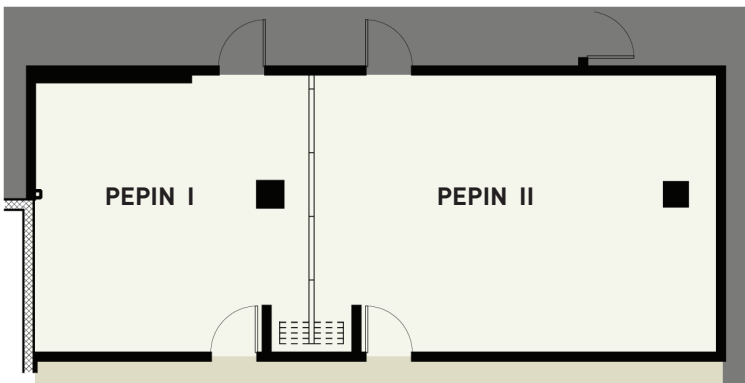
FOEGER BALLROOM

THE HOTEL JAY		SET-UP STYLE & CAPACITIES				
ROOM	SQUARE FT.	Classroom	Hollow Square	Cocktail Reception	Banquet	Theatre
Foeger I	2220	140	40	200	130	200
Foeger II	840	45	24	90	60	86
Foeger III	850	45	24	90	60	86
Foeger I & II	3060	185	-	290	190	286
Foeger II & III	1690	90	36	160	120	172
Foeger Ballroom (I, II & III)	3910	230	-	400	280	435

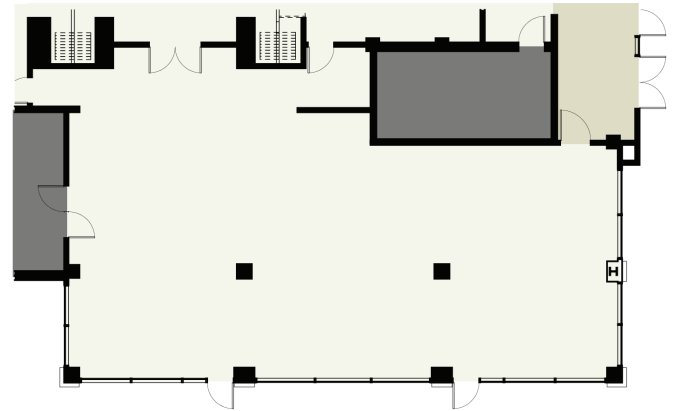
THE FOEGER BALLROOM

The Foeger Ballroom is the focal point of the conference center. It can accommodate meetings, conferences, or events of all kinds for up to 435 persons, and the space has the versatility to breakout into three small rooms. Stylish décor evokes a natural and welcoming feel and state-of-the-art audio visual outfit this space with innovation and creativity...the key to a successful meeting. When divided, all configurations offer full audio visual and wireless internet capabilities.

THE HOTEL JAY: THE PEPIN AND THE HAYNES CONFERENCE ROOMS



THE PEPIN



THE HAYNES

THE HOTEL JAY		SET-UP STYLE & CAPACITIES				
ROOM	SQUARE FT.	Classroom	Hollow Square	Cocktail Reception	Banquet	Theatre
Pepin I	310	12	12	–	20	16
Pepin II	460	24	18	–	30	30
Pepin (I & II)	770	30	–	–	50	46
The Haynes	2040	42	30	200	120	135
The Haynes Terrace	1200	–	–	100	–	–

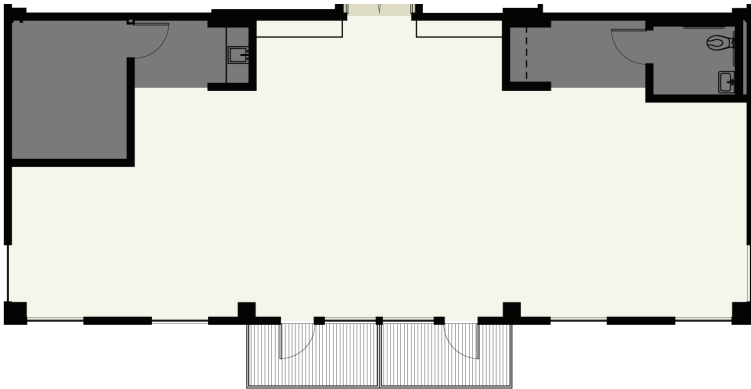
THE PEPIN

Quaint and intimate these breakout rooms can also be used as one large space courtesy of a sound buffered air wall. A versatile gathering place for small and medium size events, the main space breaks out into Pepin conference rooms I and II, and each are equipped with the latest in audio visual equipment and meeting and event amenities.

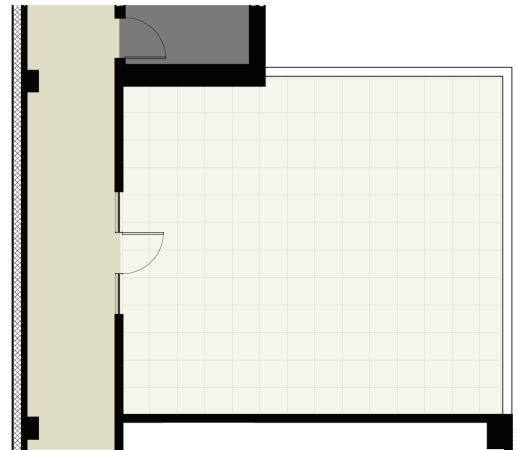
THE HAYNES

Set against Vermont's northern Green Mountains as backdrop, The Haynes conference room is the perfect setting for your meeting and/or conference; this space can be used for a variety of functions including exhibitor space, meetings, cocktail receptions, etc. It is a versatile space with oversized windows which allow natural light to stream into the space. The Haynes adjoins the Foeger Ballroom creating a flow that entices a feeling of community and opens to the stone terrace where social gathering can be held on a clear day, spring, summer, or fall.

THE HOTEL JAY: VALHALLA EXECUTIVE BOARDROOM & PENTHOUSE PATIO



VALHALLA EXECUTIVE BOARDROOM



THE PENTHOUSE PATIO

THE HOTEL JAY		SET-UP STYLE & CAPACITIES				
ROOM	SQUARE FT.	Classroom	Hollow Square	Cocktail Reception	Banquet	Theatre
Valhalla Executive Boardroom	1000	42	30	50	50	50
Penthouse Patio	576	-	-	40	-	-

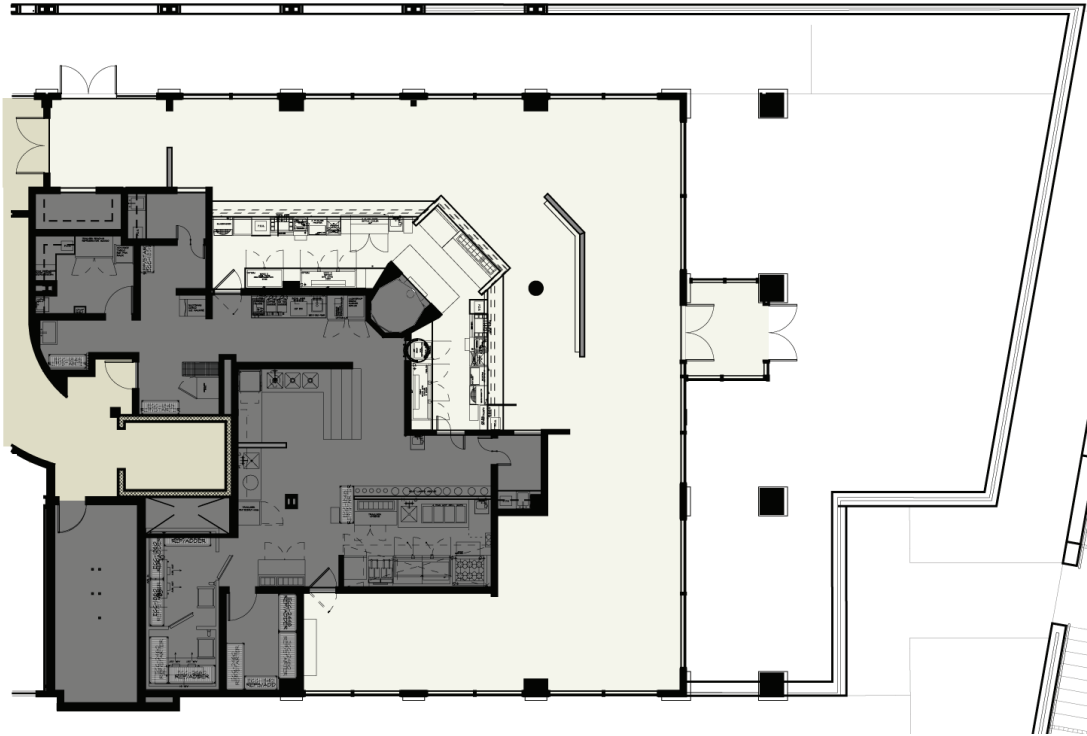
VALHALLA

One of our most distinctive spaces, the Valhalla Executive Boardroom is located on the penthouse level of Hotel Jay. With floor-to-ceiling windows guests are enveloped by the long views north into neighboring Canada. Valhalla is the quintessential meeting location as it offers decorative furnishings and a conference table that can be broken down and removed from the space, allowing other functions and events to take place in this room. Like the rest of the Hotel Jay Conference Center, The Valhalla includes state-of-the-art audio visual equipment.

THE PENTHOUSE PATIO

The Penthouse rooftop patio, which can accommodate 50 persons, overlooks the mountain and aerial Tram. It is new, unique and the perfect setting for a "WOW" factor event. It is exclusivity at its finest.

THE HOTEL JAY: THE FOUNDRY



THE FOUNDRY & PATIO

THE HOTEL JAY		SET-UP STYLE & CAPACITIES	
ROOM	SQUARE FT.	Cocktail Reception	Banquet
The Foundry	2300	150	110
The Foundry Patio	1440	70	50

THE FOUNDRY

Casual, elegant or somewhere in between Jay Peak has a vast repertoire of dining options. Our newest addition is The Foundry, where classic American styled food and drink are convenient and tasty. Every restaurant offers guests spectacular views of the mountains or valley, or maybe both. With eight dining outlets on the resort campus it is easy to accommodate a group looking to dine as one or smaller more intimate groups looking to feast alone. These spaces are also wonderful for hosting a luncheon, meeting, cocktail reception, or event.

The room itself includes a brushed steel bar that defines the front of the house and offers front-row views of our gas-fried, ceramic tile open oven. The Foundry also offers al fresco dining in late spring, summer and fall and offers broad views of both the mountain and our valleys. Inside, floor-to-ceiling windows allow you to keep an eye on skiers and riders making their way down the mountain, snowstorms headed in or sunsets dropping behind our nearly 4,000' peak.